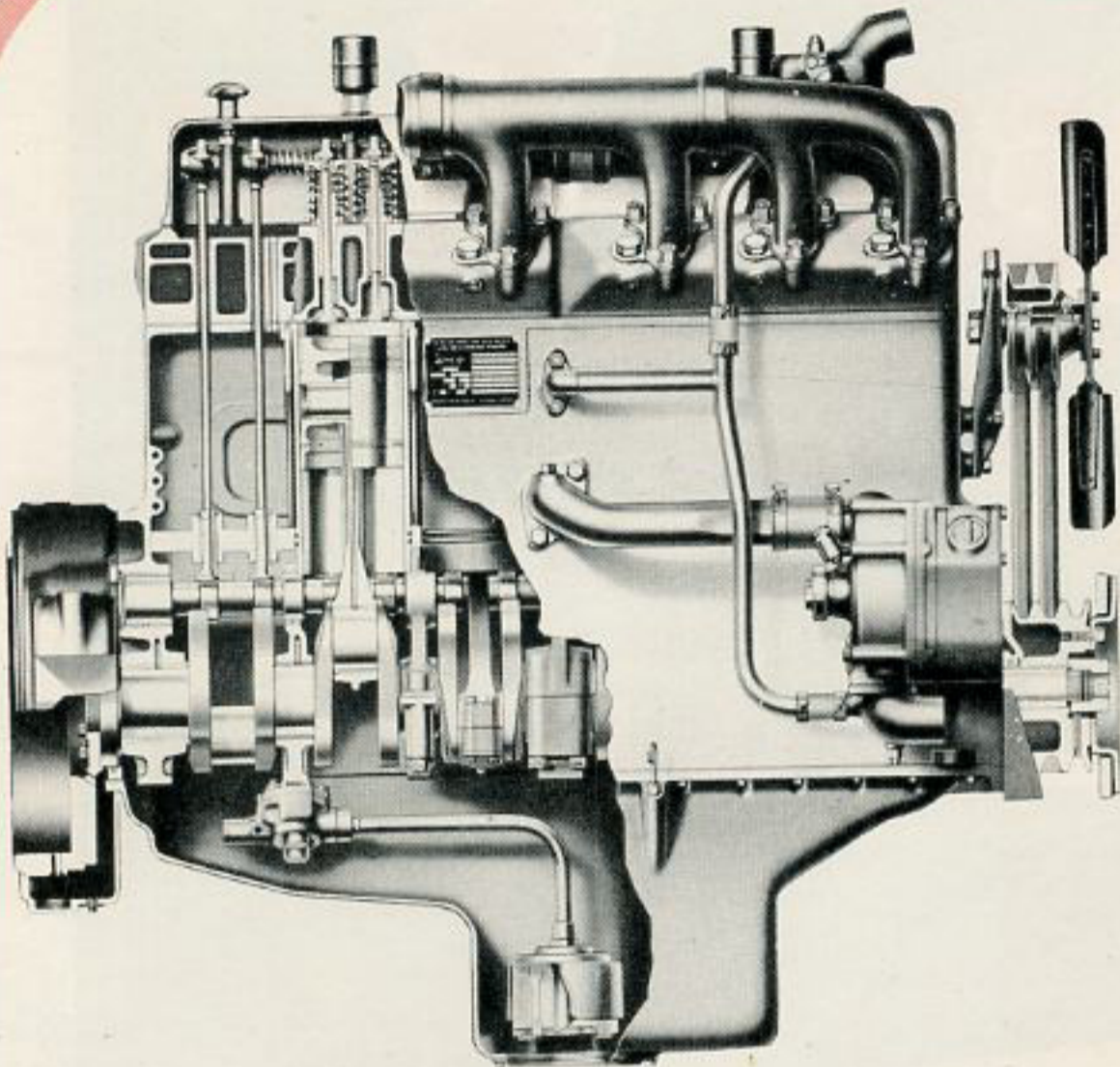


Whrens-Tox

FIRE APPARATUS



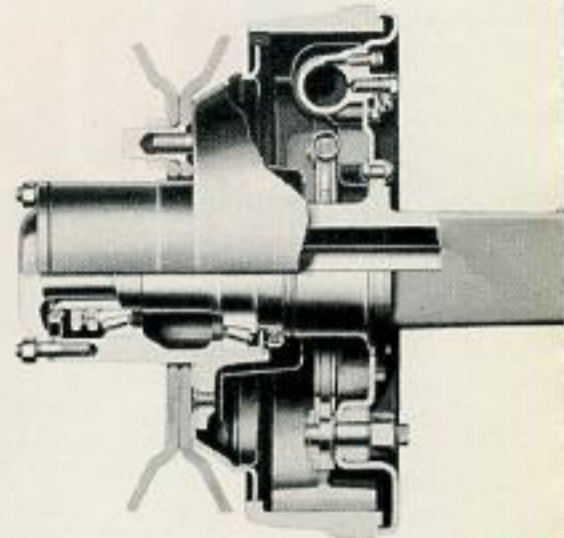
...For those who



ENGINE

The Waukesha, six cylinder, valve in head, high output engine, specially manufactured for Fire Apparatus service, is of the latest and most modern design. Features such as seven replaceable precision type main bearings, dual ignition, twin cylinder heads, removable wet type sleeves and full pressure lubrication assure long trouble-free service.

More than adequate piston displacement and high torque output make excessive engine speeds unnecessary.



REAR AXLE

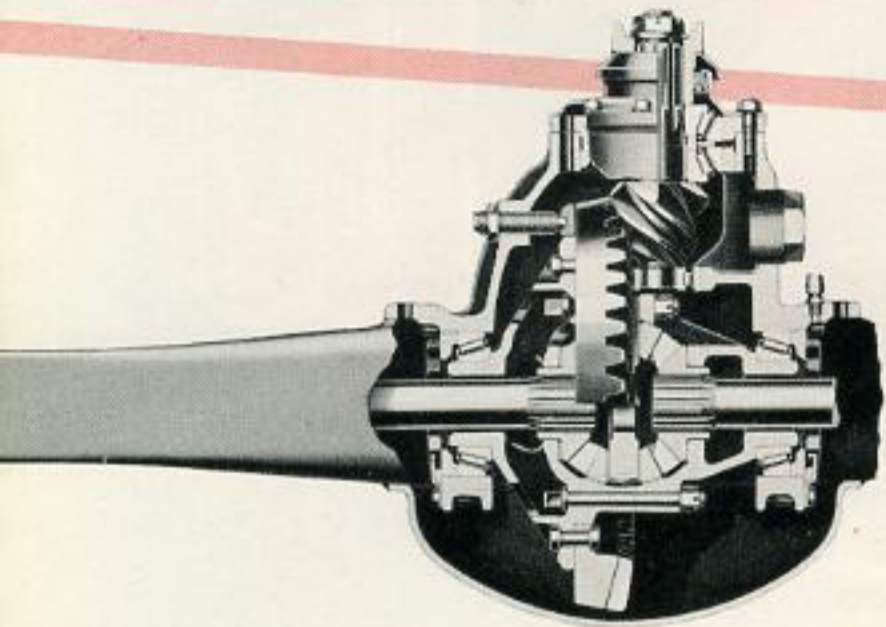
A Timken, single reduction, hypoid type rear axle with rated capacity of 10,000 lbs. is used by Ahrens-Fox policy of "Exceptional Reserve" on each model. The housing is of one piece construction with gears of carburized and hardened steel. Axle shafts are of special steel and feature Timken's "torsion flow" integral flange.



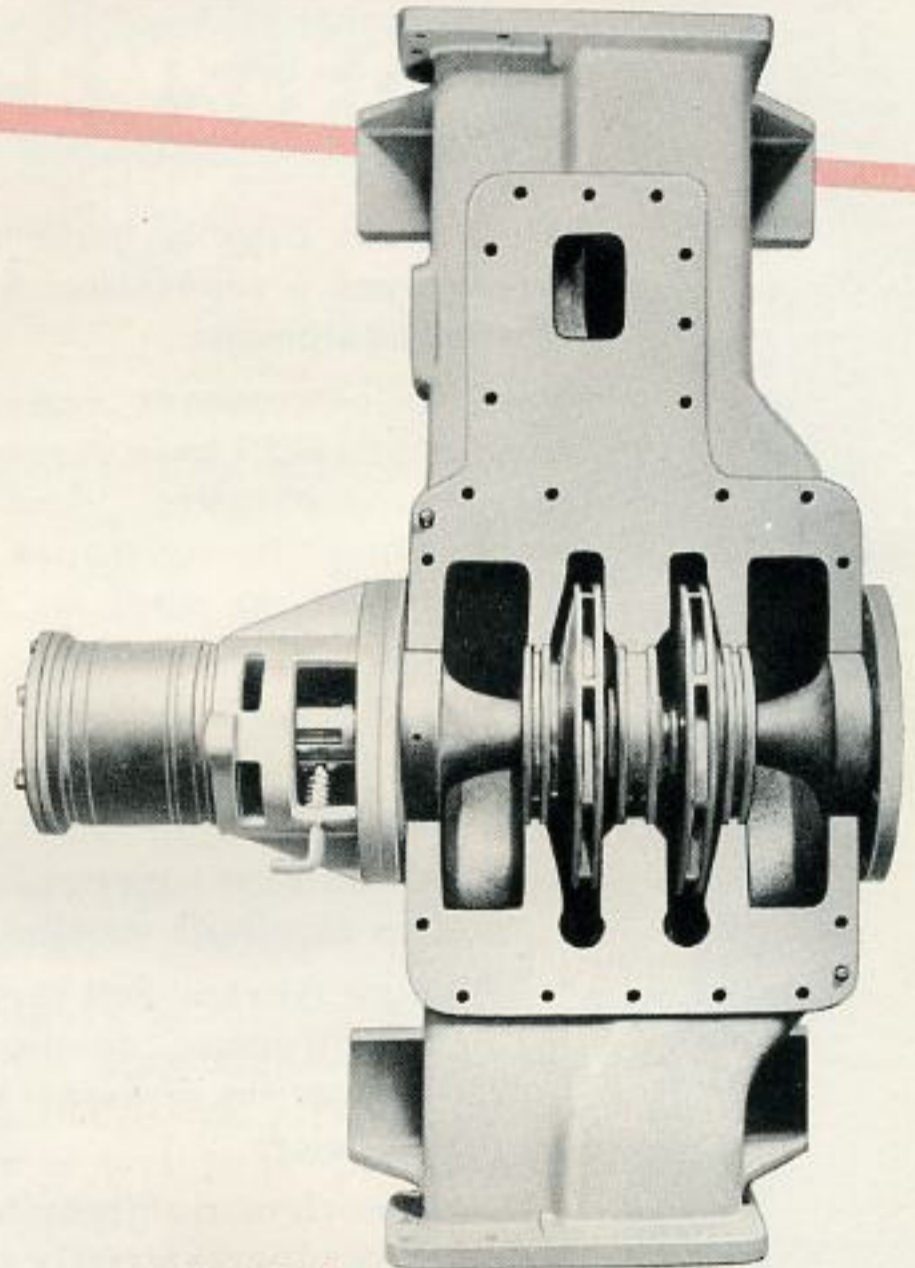
STEERING GEAR

Twin-lever, roller mounted, cam and lever type steering gear is used by Ahrens-Fox. Anti-friction bearings throughout provide ease of steering and maximum stability while in motion. The steering gear is securely mounted to the frame with a steel bracket.

insist on the finest



Ear, full floating
line with Ahrens-
' is selected for
piece construction
ened alloy steel.
are forged with
e.



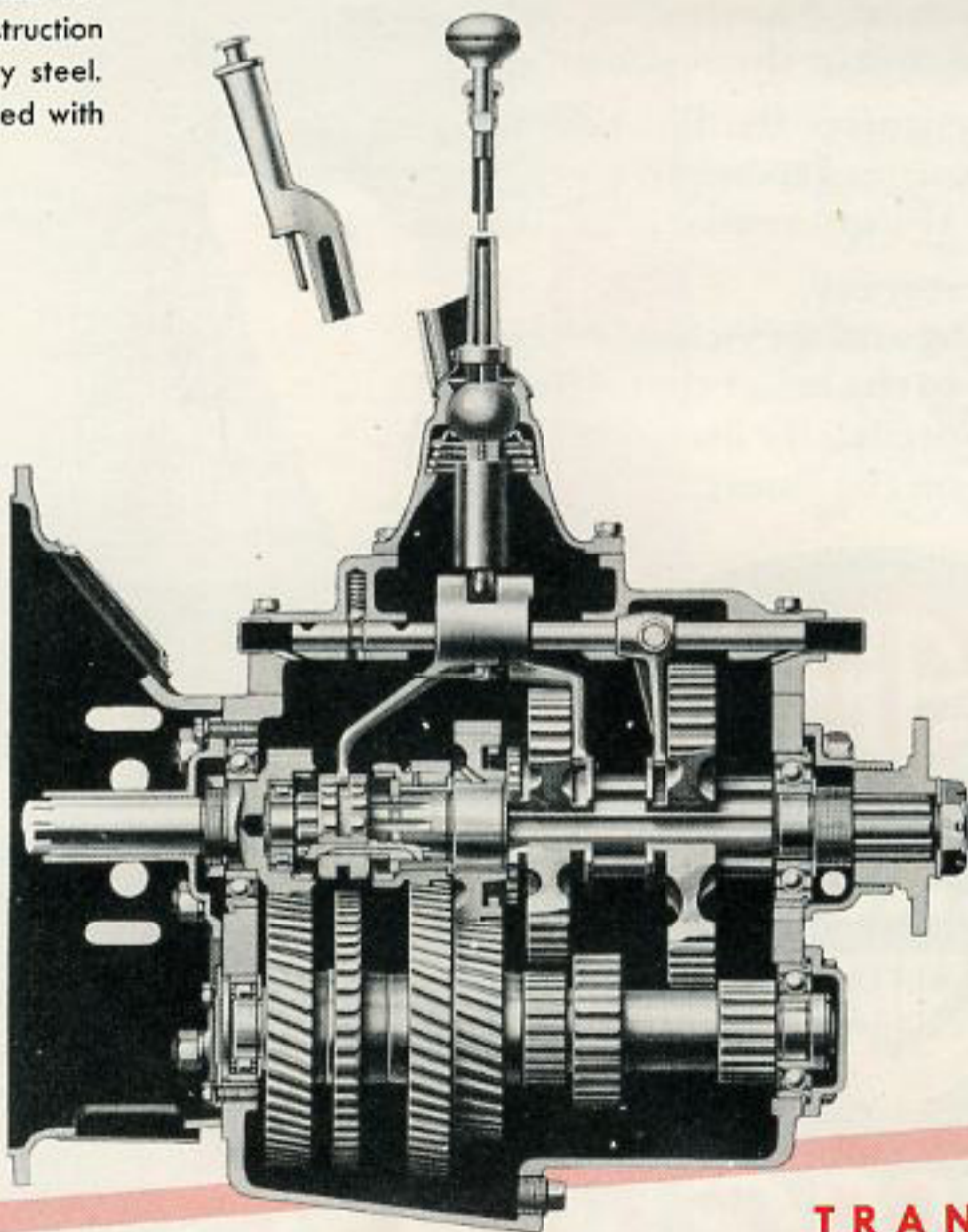
PUMPS

Ahrens-Fox centrifugal type apparatus is equipped with a Hale, two-stage, series parallel centrifugal pump.

These pumps are noted for flexibility of performance, meeting a wide range of tough fire-fighting conditions providing a continuous, non-pulsating, uniform flow at all pressures.

The dependability of the Hale pump is the result not only of sound design and well selected materials but also the result of first class workmanship by skilled mechanics using fine modern machinery.

Exhaustive tests under the most severe working conditions as well as years of actual fire-fighting service have proven the Hale pump worthy of inclusion in Ahrens-Fox quality apparatus.



TRANSMISSION

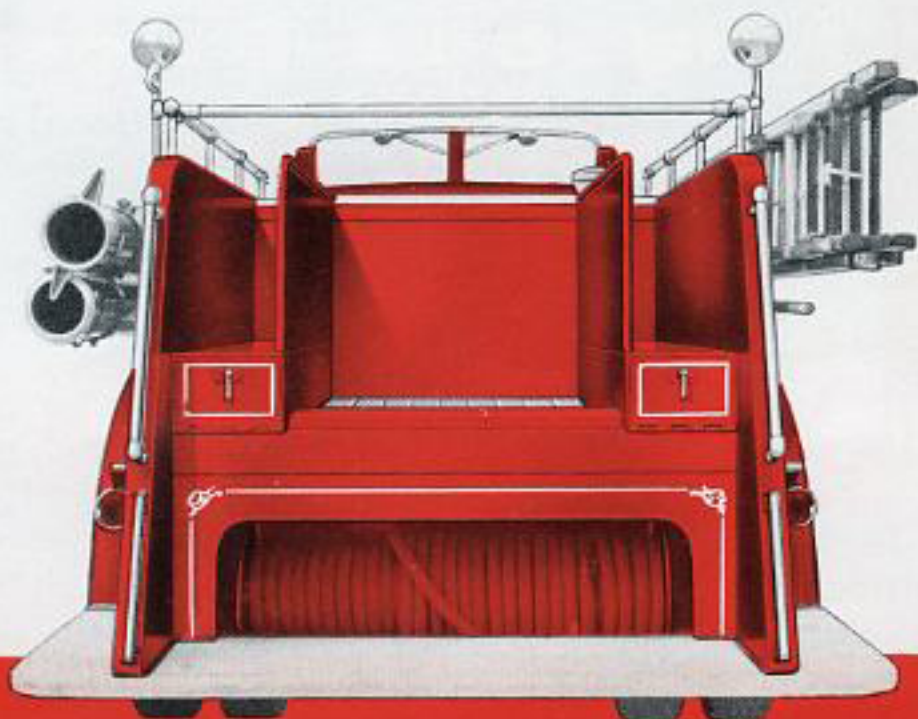
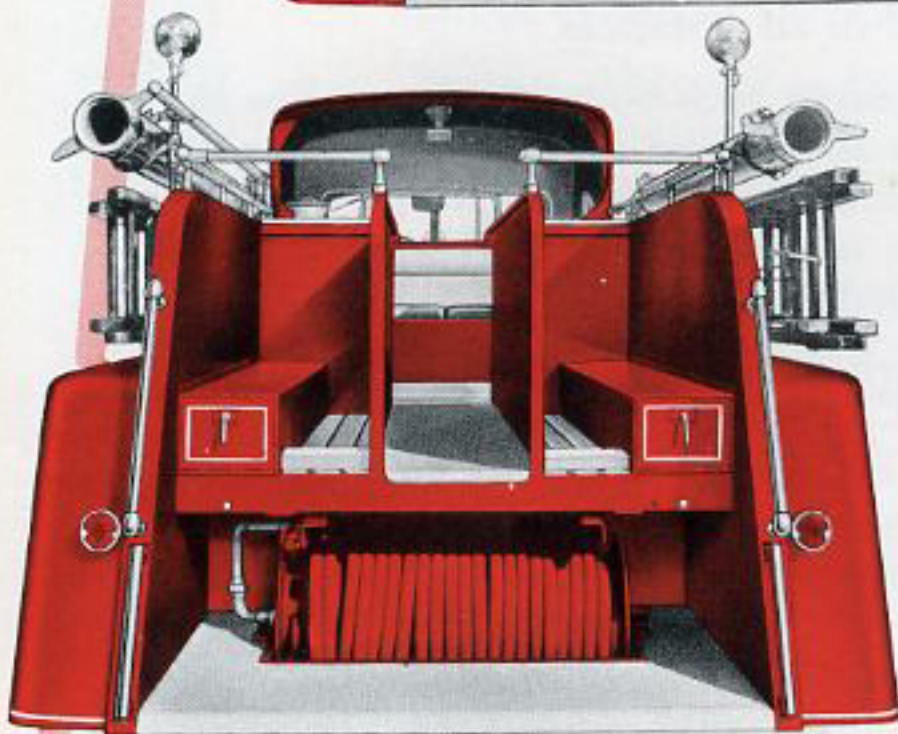
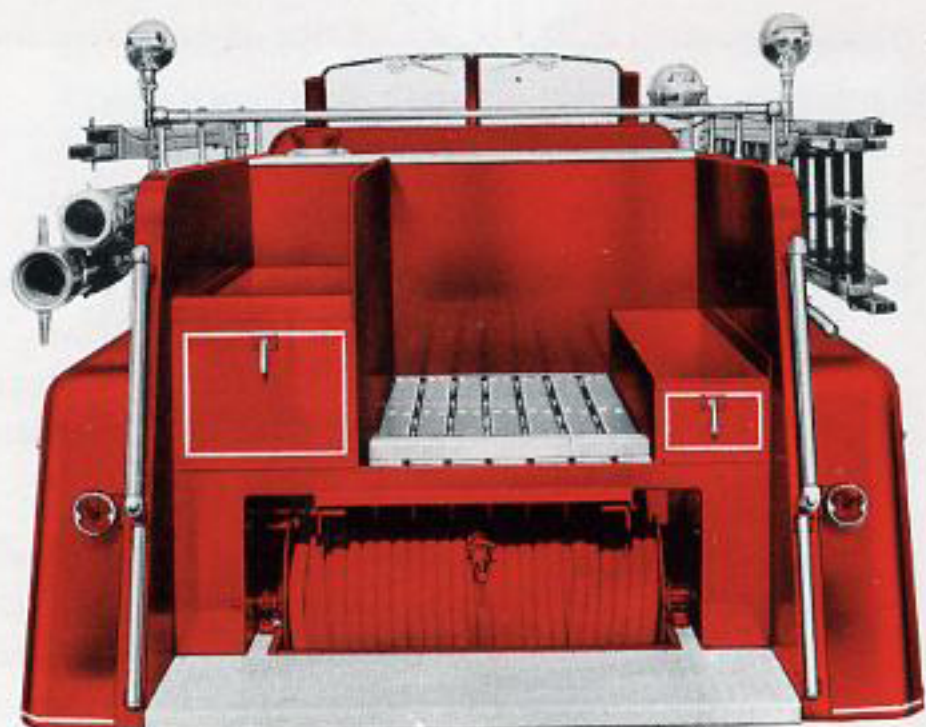
The gears are generously proportioned and are carefully hardened and ground. Shafts are of large diameter for minimum deflection and are mounted in high grade ball and roller bearings.

HOSE BODIES

Constructed of heavy gauge cold-rolled steel and substantially braced, the Ahrens-Fox hose body presents not only a smooth, streamlined appearance but is built to last through the years.

One partition is standard, as are crown type rear fenders, however, Ahrens-Fox allows much latitude in partitions, compartments, compartment type fenders and other needs peculiar to the situation.

Here are a few views of Ahrens-Fox "customer-tailored" hose bodies.





Ahrens-Fox Apparatus not only looks the part, its quality is much more than "skin-deep." Quality is built into Ahrens-Fox from the first rivet to the final shining coat of paint.

Selected steel, specially treated and machined for its particular function, is used throughout construction. Adequate and easily accessible lubrication facilities are stressed in all instances.

The massive back-bone of Ahrens-Fox Apparatus is designed for use in fire service. The special design permits a low center of gravity as well as proper alignment of the drive shafts.

The driving and braking force of the Ahrens-Fox is transmitted to the frame proper by means of massive radius rods with swivel joints at both the frame and axle connections. This type of construction demands only riding quality from the springs and relieves all shearing action from the spring center bolt.

These and many other features make possible the continuation of the traditional Ahrens-Fox policy of "exceptional reserve for long trouble-free service."

Only the finest will do.

FAMED FOR QUALITY

In the early days of hand and horse-drawn units—Ahrens-Fox enjoyed a reputation for making the finest possible fire fighting equipment.

Ever since—constant research and continued progress in engineering skill have resulted in adding lustre to an already excellent reputation. And now—as through the years—the Company continues its efforts to further advance the product so vital to the protection of every community.

Years of experience assure the symmetrical proportions—proper weight distribution and practical arrangement of all functional elements of the apparatus.

And—constant supervision of Ahrens-Fox production assures excellent workmanship throughout.

Because Ahrens-Fox recognizes the fact that the protection of entire communities depend on its apparatus—emergency service is always available to Ahrens-Fox users.

In both manufacturing and servicing, Ahrens-Fox adheres strictly to the belief that Ahrens-Fox equipment is specifically designed “for those who insist on the finest.”



FIRE ENGINES

CINCINNATI 14, OHIO